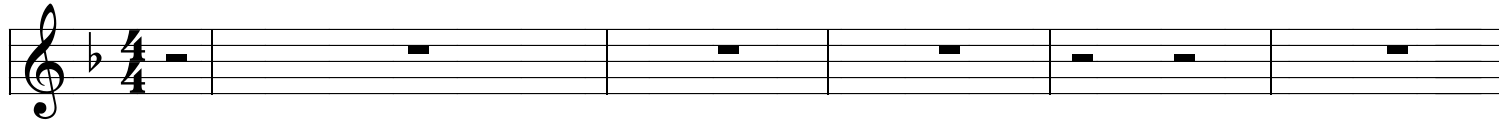


Tum Ho Kripaalu

Fast Indian swing, yet gentle and lilting

Words and music by Arun John
Arrangement by Peter Hicks and Chris Hale

C Dm7

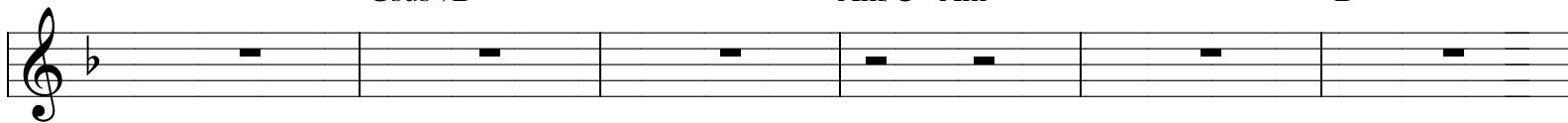


C Dm7

Gsus²/B

Am/C Am

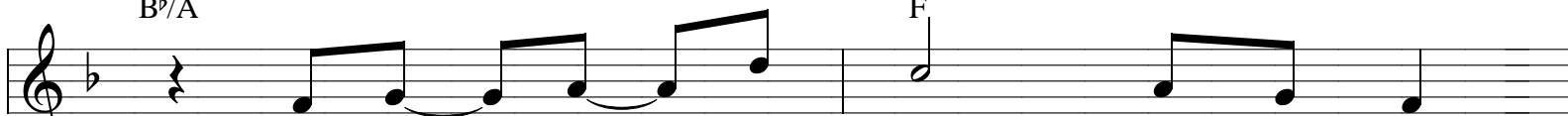
B^b



6

B^b/A

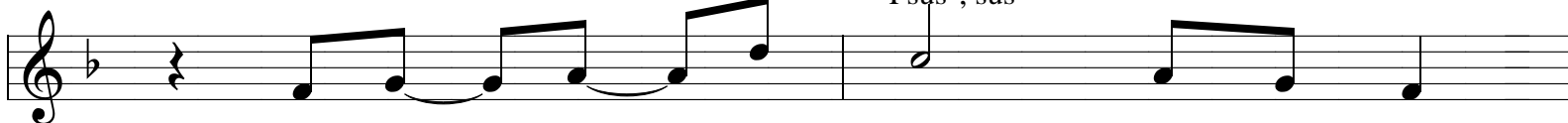
F



12

Tu - ma ho kri - paa - lu - -

Fsus², sus⁴



14

An - ta - ta yaa - mi - -

Gsus²

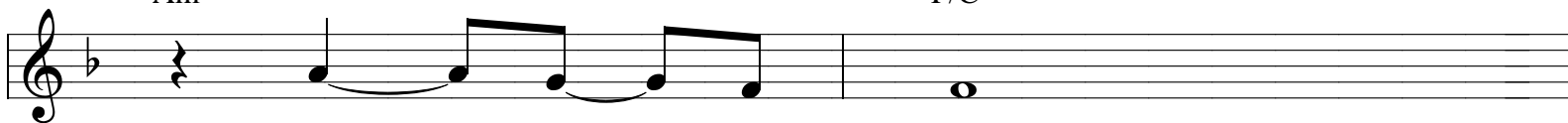


16

Ka - ru - na - mai saa - ga - ra

Am

F/C



18

Khris - ta Pra - bhū

D⁷ sus²



20

Ja - ga - ta Vi - dhāa - taa - -

Tum Ho -2-

22 Paa - pa ni - vaa - ra - na

Musical staff for line 22, starting at measure 22. The melody begins with a quarter rest, followed by a half note G4, a quarter note A4, a quarter note B4, a quarter note C5, a quarter note B4, and a quarter note A4. The second measure starts with a half note G4, followed by a quarter note A4, a quarter note B4, and a quarter note C5. The chord E♭maj7 #4 is indicated above the staff.

24 Shrish- ti ke Swaa - mi

Musical staff for line 24, starting at measure 24. The melody begins with a quarter rest, followed by a half note G4, a quarter note A4, a quarter note B4, a quarter note C5, a quarter note B4, and a quarter note A4. The second measure starts with a half note G4, followed by a quarter note A4, a quarter note B4, and a quarter note C5. The chord Gsus2 is indicated above the staff.

26 Khris - ta Pra - bhū

Musical staff for line 26, starting at measure 26. The melody begins with a quarter rest, followed by a half note G4, a quarter note A4, a quarter note B4, a quarter note C5, a quarter note B4, and a quarter note A4. The second measure starts with a half note G4, followed by a quarter note A4, a quarter note B4, and a quarter note C5. The chord Am is indicated above the first measure, and B♭ is indicated above the second measure.

28

Musical staff for line 28, starting at measure 28. The staff is empty, indicating a rest or a break in the music. The chord B♭maj7(#11) is indicated above the staff.

30 Jee - wa - na ja - la Pra - bhū
vaa ra - na

Musical staff for line 30, starting at measure 30. The melody begins with a quarter rest, followed by a half note G4, a quarter note A4, a quarter note B4, a quarter note C5, a quarter note B4, and a quarter note A4. The second measure starts with a half note G4, followed by a quarter note A4, a quarter note B4, and a quarter note C5. The chord G(add2) is indicated above the staff.

32 Ye - shu - tu - hai
Me - re Pra - bhū - tum

Musical staff for line 32, starting at measure 32. The melody begins with a quarter rest, followed by a half note G4, a quarter note A4, a quarter note B4, a quarter note C5, a quarter note B4, and a quarter note A4. The second measure starts with a half note G4, followed by a quarter note A4, a quarter note B4, and a quarter note C5. The chord Am/C is indicated above the first measure, and Am is indicated above the second measure.

34 Pyaa - saa - mai - bhi -
Praa - na - di - yo - hai

Musical staff for line 34, starting at measure 34. The melody begins with a quarter rest, followed by a half note G4, a quarter note A4, a quarter note B4, a quarter note C5, a quarter note B4, and a quarter note A4. The second measure starts with a half note G4, followed by a quarter note A4, a quarter note B4, and a quarter note C5. The chord Am is indicated above the first measure, and B♭ is indicated above the second measure.

Tum Ho -3-

36 B^b/A D^7 sus2
Ka - bhi naa ra - hu - - n - gaa
Paa - - pin - a kaa - - ran

38 G sus²/B
Sa - - chaa gyaa - - na mai
Rakh - - ta -ba haa - - yaa

40 A m/C A m
tu - jhe se pin paa - ka - ra
Paa - - pin kaa - - ra - na

42 A m B^b To Coda
An - ta - ra man - a ki -
Kru - sa u - tha - - yaa -

44 B^b/A F
Shan - ti - ga - na paa - - a - u
Lo - - ga - na kaa - - - ran

46 F/E D m add2
Mu - ka - ti mi - le - gi - -
Khu - da ko mi - taa ka - - ra

48 D m add9/C E^b (add9) (add#4)
Ye - shu Ma - si se - -
Jee - wa - na de - - ne - -

Tum Ho -4-

50 Dwaa - re kha - raa hu
Sha - ma ke Pra - bhu ji

Gsus²

52 A - pa - naa lo
Dhee - re dha - ro

Am B^b

54

B^bmaj7(#11)

56 Kash - ta ni - Tu - ma ho kri -

B^b/A

58 Paa - lu - - An - ta - ra

F F/E

60 yaa - mi - Ka - ru - na mai

Dm add2 Dm add9/C

62 Saa - ga - ra Khris - ta Pra

Gsus² Am

Tum Ho -5-

F/C

64 -bhu Ja - ga - ta vi -

This staff shows measures 64 and 65. Measure 64 contains a whole note chord F/C. Measure 65 contains a half note rest followed by a melodic line: G4 (quarter), A4 (quarter), B4 (quarter), C5 (quarter).

D 7sus2

66 dhaa - ta - - Paa - pa ni -

This staff shows measures 66 and 67. Measure 66 contains a half note chord D 7sus2 followed by a melodic line: D4 (quarter), E4 (quarter), F4 (quarter), G4 (quarter). Measure 67 contains a half note rest followed by a melodic line: A4 (quarter), B4 (quarter), C5 (quarter), D5 (quarter).

E♭maj7 #4

68 vaa - ra - na Shrish- ti ke

This staff shows measures 68 and 69. Measure 68 contains a half note chord E♭maj7 #4 followed by a melodic line: E♭4 (quarter), F4 (quarter), G4 (quarter), A4 (quarter). Measure 69 contains a half note rest followed by a melodic line: B4 (quarter), C5 (quarter), D5 (quarter), E5 (quarter).

Gsus2

Am

70 Swa - mi Khris - ta Pra

This staff shows measures 70 and 71. Measure 70 contains a half note chord Gsus2 followed by a melodic line: G4 (quarter), A4 (quarter), B4 (quarter), C5 (quarter). Measure 71 contains a half note rest followed by a melodic line: D5 (quarter), E5 (quarter), F5 (quarter), G5 (quarter).

F/C

72 - bhu Tu - ma ho kri -

This staff shows measures 72 and 73. Measure 72 contains a whole note chord F/C. Measure 73 contains a half note rest followed by a melodic line: G4 (quarter), A4 (quarter), B4 (quarter), C5 (quarter).

F

74 paa - lu - - An - ta - ra

This staff shows measures 74 and 75. Measure 74 contains a half note chord F followed by a melodic line: F4 (quarter), G4 (quarter), A4 (quarter), B4 (quarter). Measure 75 contains a half note rest followed by a melodic line: C5 (quarter), D5 (quarter), E5 (quarter), F5 (quarter).

F7sus2

76 yaa - mi Ka - ru - na mai

This staff shows measures 76 and 77. Measure 76 contains a half note chord F7sus2 followed by a melodic line: F4 (quarter), G4 (quarter), A4 (quarter), B4 (quarter). Measure 77 contains a half note rest followed by a melodic line: C5 (quarter), D5 (quarter), E5 (quarter), F5 (quarter).

Tum Ho -6-

78 Gsus² Am

78 saa - ga - ra Khris - ta Pra

Detailed description: This block contains the first two measures of the musical score. Measure 78 features a Gsus2 chord and the lyrics 'saa - ga - ra'. Measure 79 features an Am chord and the lyrics 'Khris - ta Pra'. The melody consists of quarter notes in measure 78 and a half note in measure 79.

80 B^b

80 - bhu

Detailed description: This block contains measure 80. It features a Bb chord and the lyric 'bhu'. The melody consists of a single half note.

82 B^bmaj⁷(#11)

82

Detailed description: This block contains measure 82. It features a Bbmaj7(#11) chord. The melody consists of a single half note.