



Gm/B<sup>b</sup> C(add9) A/C<sup>#</sup> Gm/B<sup>b</sup> C(add9)

shaa-ma lun Ye-su te - raa naam Su - bha sha - ma lun Ye - su te - raa naam wo jo

Gm A/C<sup>#</sup> Gm/B<sup>b</sup> Gm A/C<sup>#</sup> Dmsus<sup>2</sup> Fine

paa - wa - na sun - da - ra naam wo jo paa - wa - na sun - da - ra naam

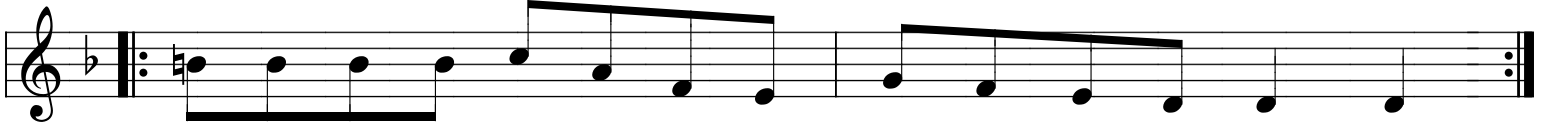
Dm Dmsus<sup>2</sup>

Dmsus<sup>2</sup>

Sho - ka mi - te ma - na mei - n su - kha paa - ye

G/B

Dmsus<sup>2</sup>

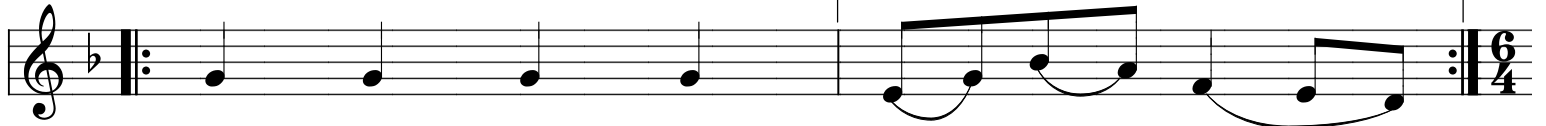


ni - ri - ba - la ko - ba - la - wa - na ba - naa - ye

G/B

1.

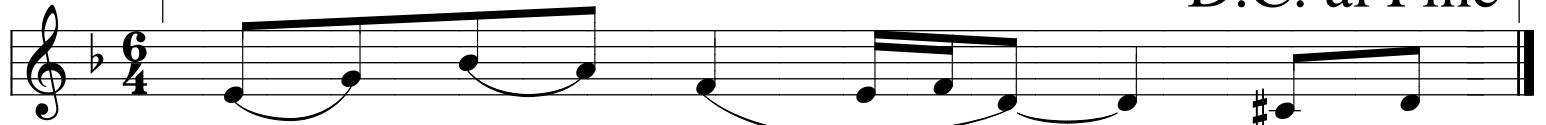
Dm



shra - dha se aa - ye - jo - dhaa - m

2.

D.C. al Fine



ye - jo - dhaa - m Su - bha